

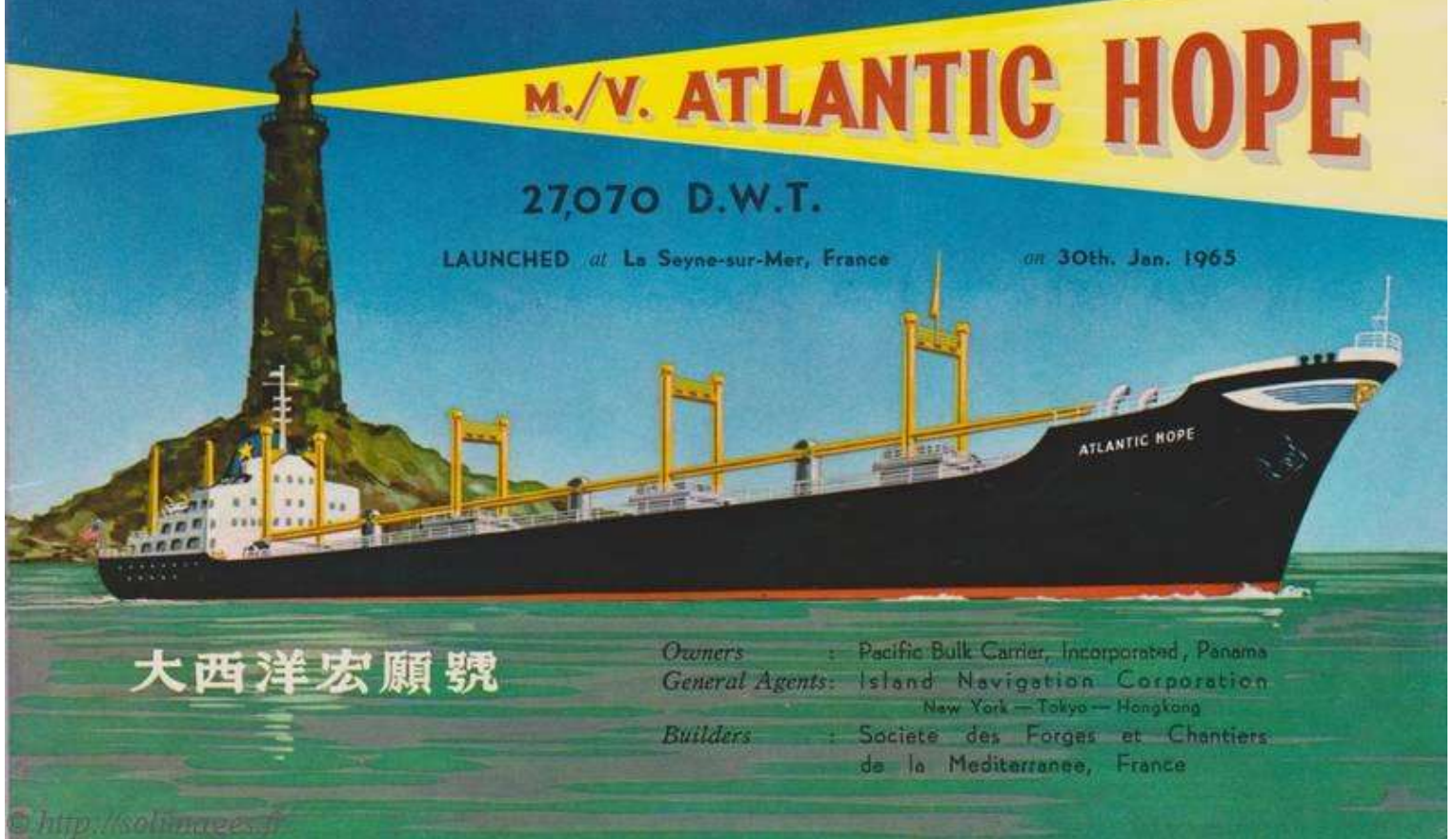
THE LARGEST OCEAN-GOING LAKE TRADER designed for the St. Lawrence Seaway

M./V. ATLANTIC HOPE

27,070 D.W.T.

LAUNCHED at La Seyne-sur-Mer, France

on 30th. Jan. 1965



大西洋宏願號

Owners : Pacific Bulk Carrier, Incorporated, Panama
General Agents: Island Navigation Corporation
New York — Tokyo — Hongkong
Builders : Societe des Forges et Chantiers
de la Mediterranee, France

© <http://solimages.fr>

頌詞

我命名你為“大西洋宏願”，
帶來人類的幸福和希望，
大湖滾滾，遠洋汪汪，
你將為溥利工商，振興農業的津梁。

我命名你為“大西洋宏願”，
帶來人類的幸福和希望，
天風琅琅，海水滄滄，
你放出豐衣足食，自由平等的光芒。

AN ENCOMIUM

I christen Thee "Atlantic Hope",
Thou wilt bring well-being and hope to Humanity;
The waters of the Great Lakes are rolling in succession,
And the waters of the extensive oceans are vast and deep;
Thou wilt be a bridge conferring universal benefit
Upon the industries and commerce.
And giving promotion to agriculture.

I christen Thee "Atlantic Hope",
Thou wilt bring well-being and hope to Humanity;
The breezes of heaven are gently blowing
And the waters of the sea illimitable;
Thou emittest the ray of abundance and plenty
And of freedom and equality.

© <http://solimages.fr>

PANEGYRIQUE

JE T'AI BAPTISE SOUS LE NOM DE "ATLANTIQUE ESPERANCE",
TU APPORTERAS A L'HUMANITE BIEN-ETRE ET ESPOIR.
NE SONT JAMAIS LASSES DE COULER LES EAUX DES GRANDS LACS,
ET LES OCEANS ETENDUS N'OFFRENT A LA VUE QUE PROFONDEUR ET IMMENSITE;
TU SERAS FIER D'ETRE LE PONT SERVANT A ATTRIBUER DES AVANTAGES A L'INDUSTRIE ET AU COMMERCE,
ET A ENCOURAGER LA PRODUCTION DE L'AGRICULTURE.

JE T'AI BAPTISE SOUS LE NOM DE "ATLANTIQUE ESPERANCE",
TU APPORTERAS A L'HUMANITE BIEN-ETRE ET ESPOIR.
NE CESSENT DE SOUFFLER LES VENTS DOUX DU CIEL,
ET SONT A JAMAIS INTARISSABLES LES EAUX DE LA MER;
TU SERAS HEUREUX D'ETRE L'INSTRUMENT SERVANT A JETER LA LUEUR D'ABONDANCE ET DE RICHESSE,
ET A LANCER LE RAYON DE LIBERTE ET D'EGALITE.

© <http://solimages.fr>

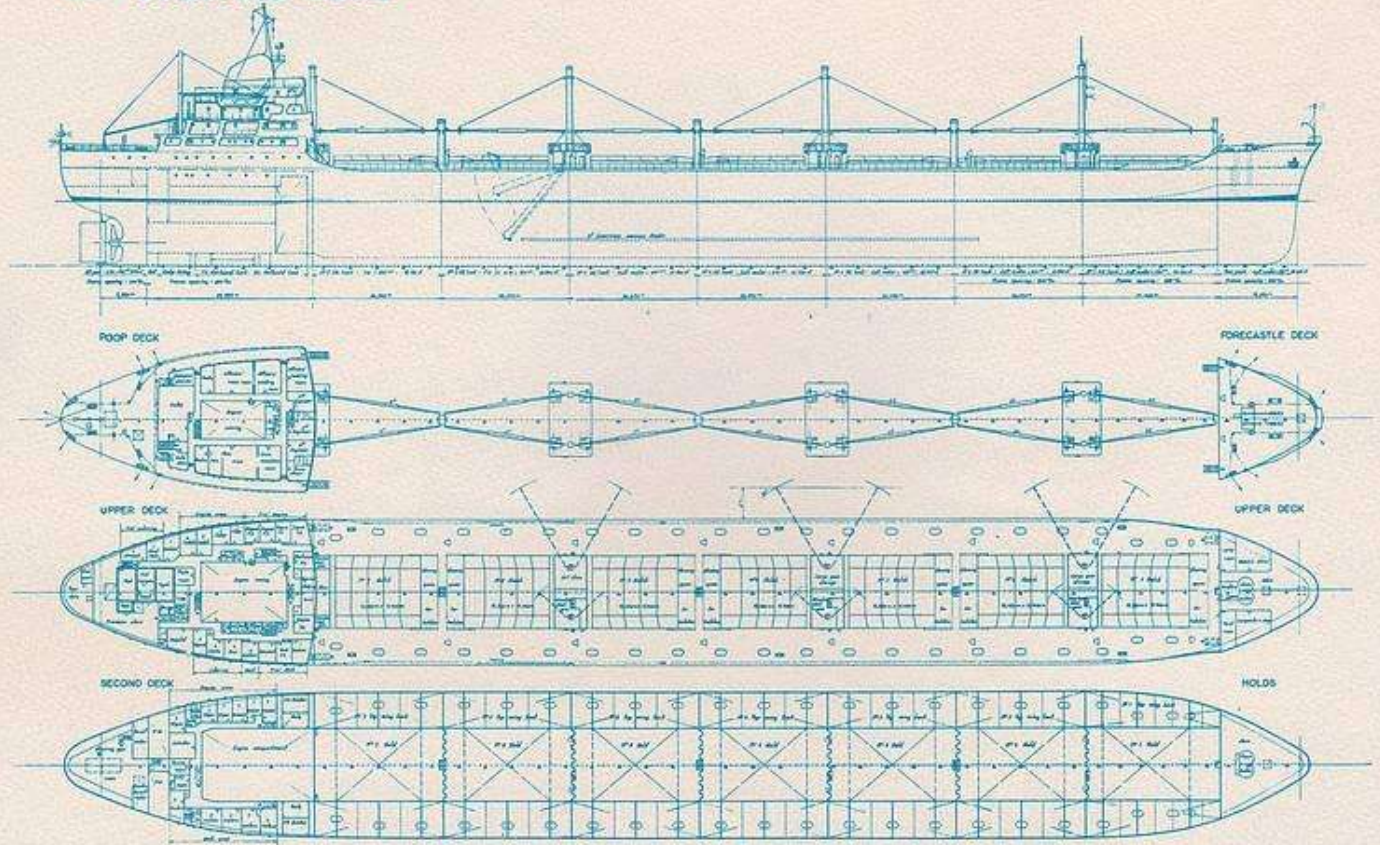
PRINCIPAL PARTICULARS OF M/V "ATLANTIC HOPE"

DEADWEIGHT 27.070 L.T.

Length O. A.	: 635' 0"	Service Speed	: 15 Knots
Length B. P.	: 600' 3"	Hold Capacity	: 1,297,720 cu. ft.
Breadth Moulded	: 75' 0"	Upper Wing Tank Capacity	: 196,492 cu. ft.
Depth to Upper Deck	: 48' 8"	Total Grain Capacity	: 1,494,212 cu. ft.
Draft, Summer	: 33' 0"	Bunker Capacity	: 1,500 L/T
Propulsion Machinery	: F. C. M. — SULZER TYPE 6 RD 76		
	Bore	760 mm.	Stroke 1,550 mm.
	Nominal Output	9,600 BHP	RPM 119
Classification	: LR ✦ 100A1 ✦ LMC		
Additional Features	: (A) Specially fitted with Wing Tanks for self-discharging and self-trimming purposes. (B) Specially strengthened for carrying Iron Ore purpose. (C) Specially designed for carrying cargoes of stowage factors varying from 18 to 80 cubic feet without affecting trim and stability.		

© <http://solimages.fr>

M/V "ATLANTIC HOPE"

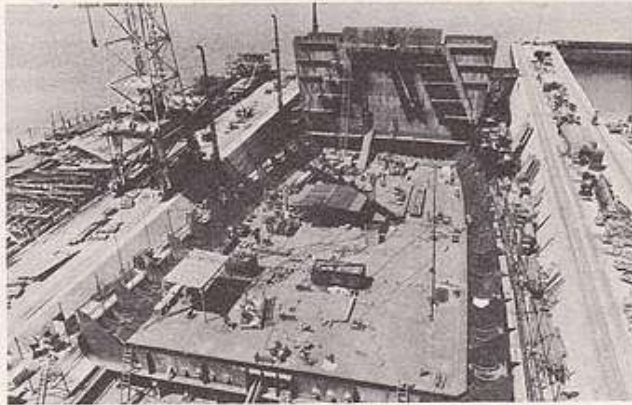


© <http://solimages.fr>

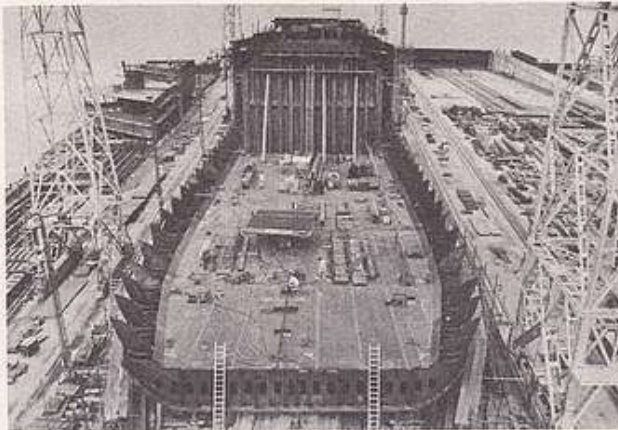
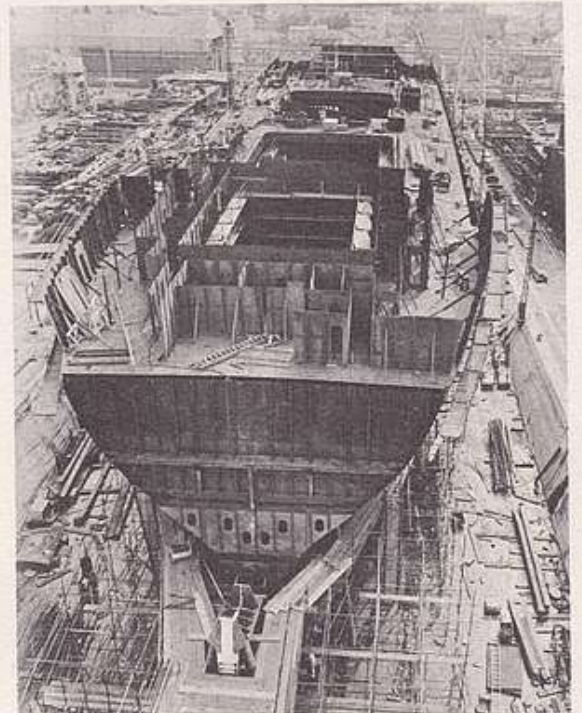


© <http://solimages.fr>





工程在進行中
 Construction Work In Progress





海道中的水閘
Locks Along The Seaway



© <http://solimages.fr>

When vessels transit the St. Lawrence Seaway between Lake Erie and Lake Ontario, one may see the Niagara Falls, one of the wonders of the world, which is located in the vicinity of the Welland Lock.



Printed by Lee Fung Printing Co., Ltd. Hong Kong